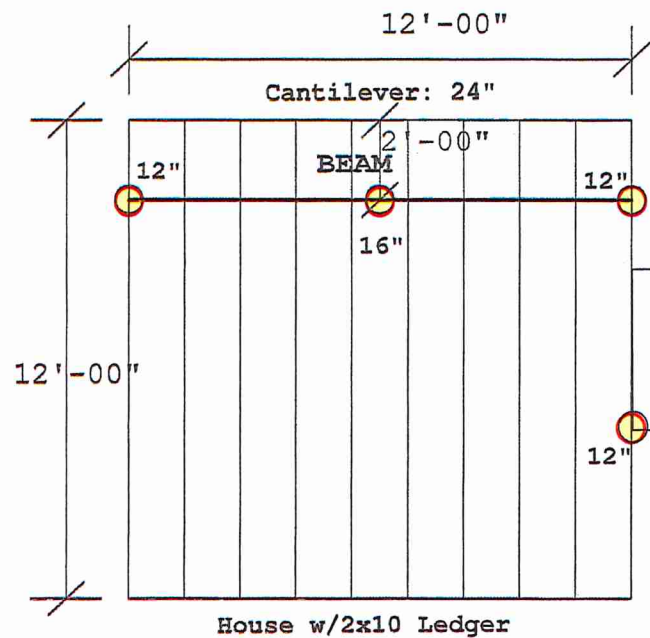




Deck Submittal Requirements

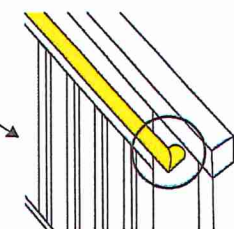
1. Type of footings, number of footings, location, size and depth? _____

2. Size and spacing of posts _____
3. Size of beams – Example (2) 2x10 _____
4. Size of ledger, joist, type of lumber, location of double joists _____
5. Ledger attachment? Ledger Fasteners? _____
6. Deck height of ground? _____
7. Guard height? _____ Baluster spacing? _____ Material? _____
Intermediate guard post spacing? (Cannot notch 4x4 posts) _____
8. Post to beam detail required
9. Stair Detail Required. Stair stringer spacing? 9 10 11 12 13 14 15 16" O.C
10. Stair width inside of guards? (36" Minimum) _____ Tread depth? _____
Riser Height? _____ Graspable handrail with returns? _____
11. Decking Material? _____ Composite? _____ Diagonal? YES / NO
12. Stair Detail Required
13. Beam cantilever distance? Joist cantilever distance?
14. Size of deck & landings – Please submit a scalable drawing
15. Material supply list if available
16. **Site plan and (or) Certificate of Survey with distances to all property lines.** Site plan should identify all accessory structures and landscaping/retaining walls in close proximity to deck footings.

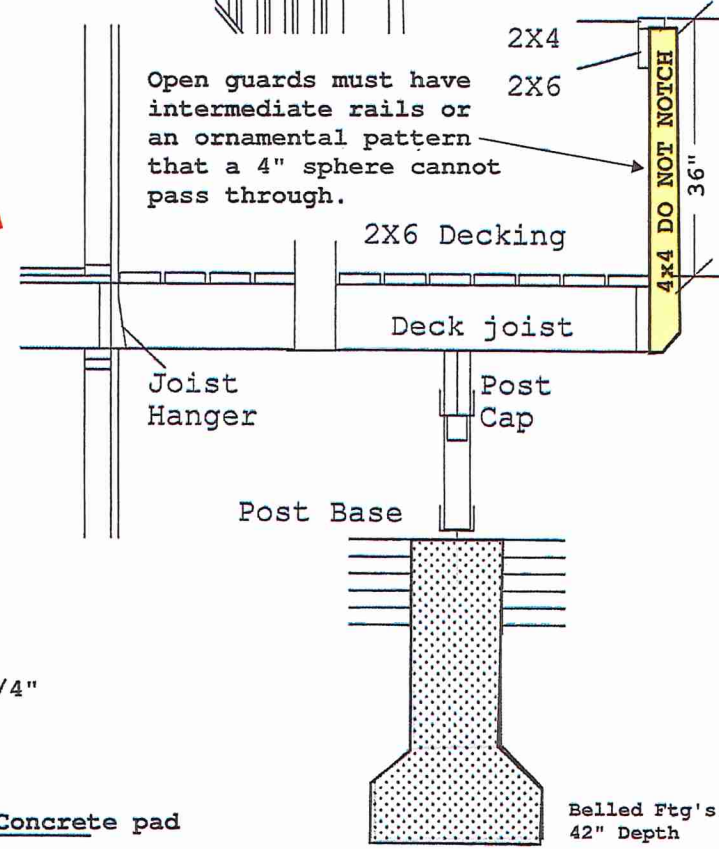


EXAMPLE ONLY

Graspable handrail that returns at ends



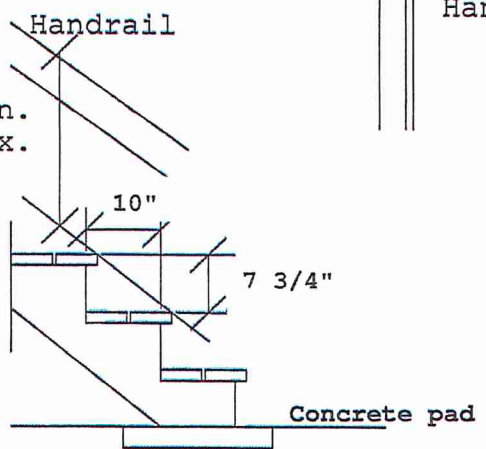
Open guards must have intermediate rails or an ornamental pattern that a 4" sphere cannot pass through.



Details:

- Beam: (2) 2x10
- Joists: 2x10 16" O.C
- Posts: 6x6 - 6'0" Spacing
- Ledger: 2x10 w/flashing - Ledgerlok Fasteners
- Decking: Trex Enhance Decking
- Footings: 42" Depth w/12" Piers
- Deck height: 8'6"
- Stair Stringer: 12" O.C

34"min.
38"max.

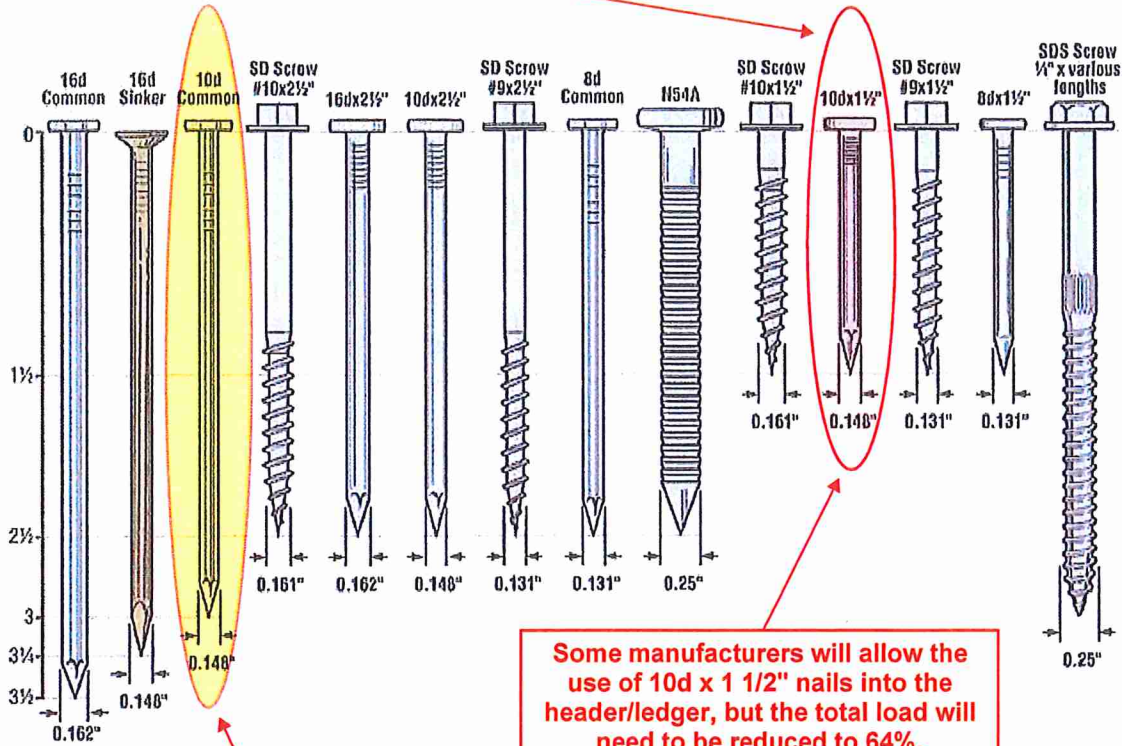


Handrail: 1 1/4" Circular handrails with returns at end.

Joist Hangers: Simpson LUS210Z (ZMAX)
Fasteners: 10d common hot dipped galvanized or #9 2 1/2" Strong-Drive SD screws

Soil = 1500psf
Joist and beams are SPRUCE-PINE-FIR #2

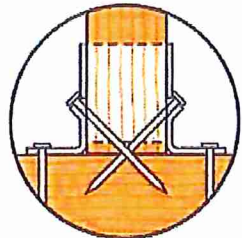
10d x 1 1/2" nails are never allowed into the joists or as double shear nails



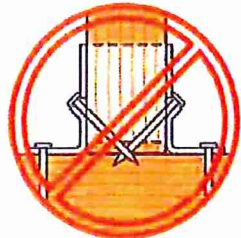
Some manufacturers will allow the use of 10d x 1 1/2" nails into the header/ledger, but the total load will need to be reduced to 64%.

10d Hot-dipped galvanized or stainless steel fasteners are the most COMMON fasteners required by joist manufacturers

The Simpson Strong-Tie SD structural-connector screw is the only approved screw with Simpson joist connectors/hangers.



Double shear nailing should use full length common nails



Shorter nails may not be used as double shear nails

Check with your joist manufacturer to ensure the right size fasteners are being used.